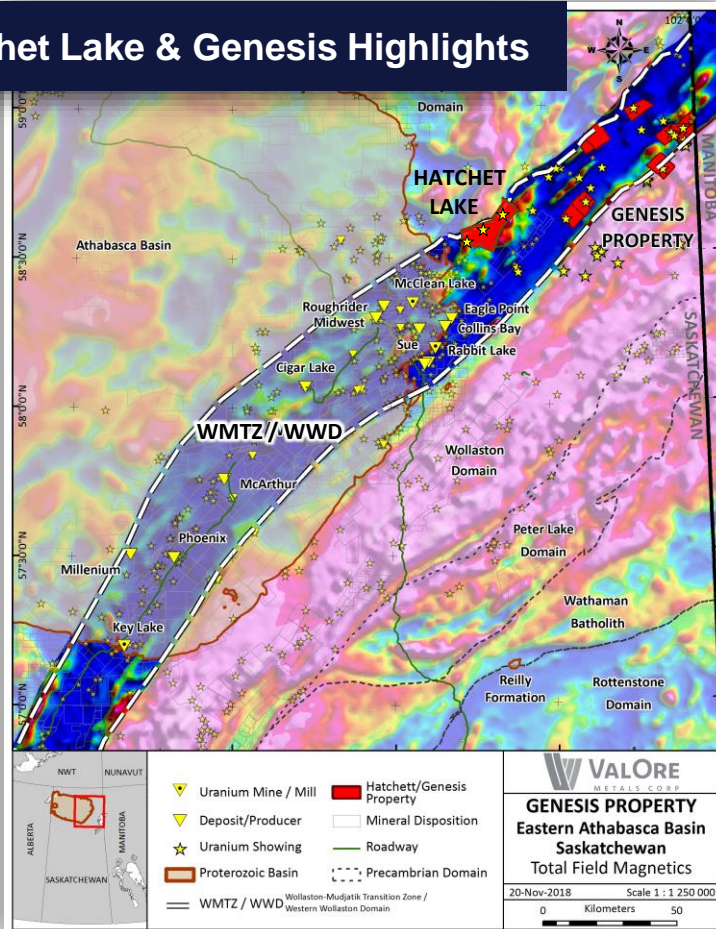


Hatchet Lake + Genesis Uranium in Saskatchewan.

Strategic, underexplored landholdings in a prolific uranium belt

Hatchet Lake & Genesis Highlights



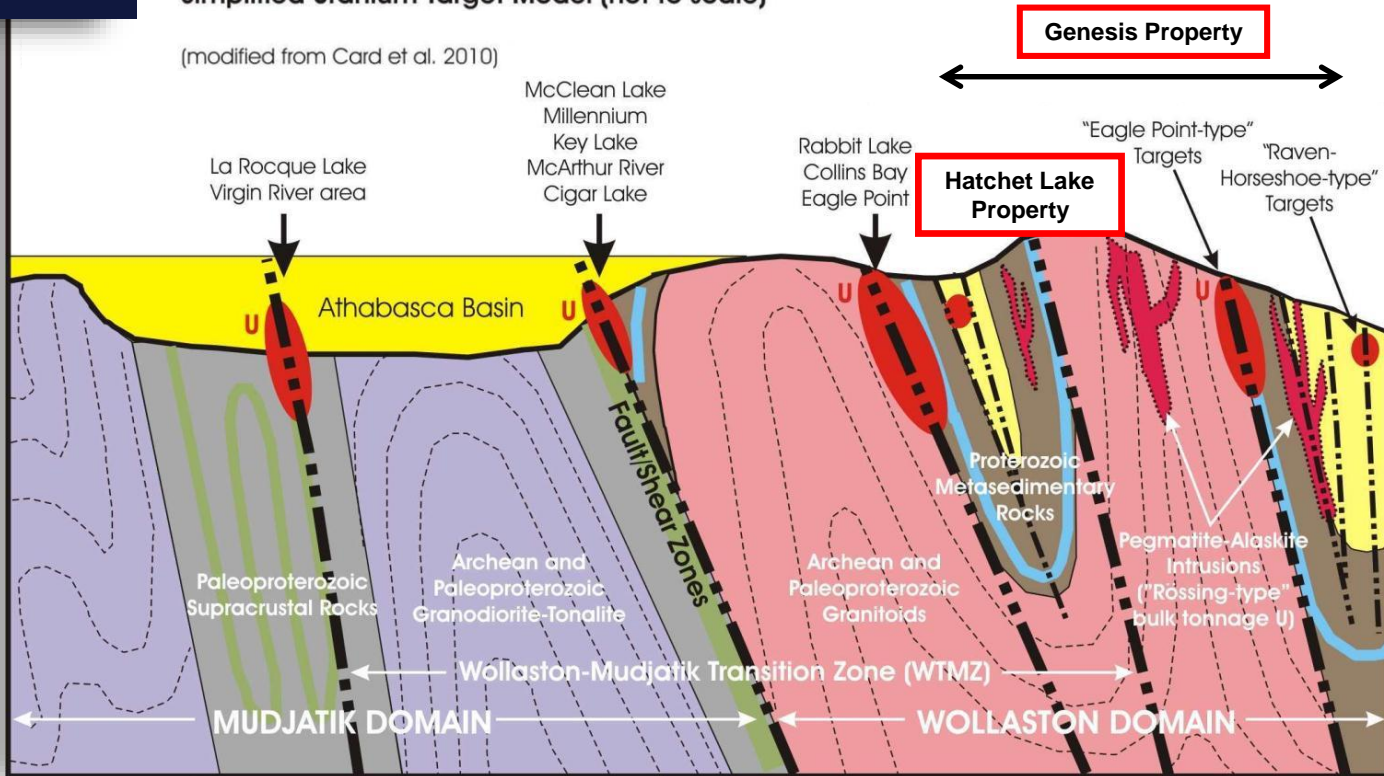
Strategic Lands in Prolific Uranium District

- Saskatchewan: a prolific uranium district with established infrastructure, political support, production of 15% global annual uranium
- Large land packages: **Hatchet Lake - 13,711 ha**
Genesis - 36,949 ha
- Western Wollaston Domain (WWD) and Wollaston-Mudjatik Transition Zone (WMTZ) host majority of known Canadian uranium deposits and all of Canada's operating uranium mines
- Hatchet Lake and Genesis are situated along the underexplored northeast extension of this highly-prospective belt
- Shallow basement hosted, unconformity related uranium targets
- Substantial historic exploration datasets with uranium anomalism and showings to help guide inaugural exploration programs

Exploration Model

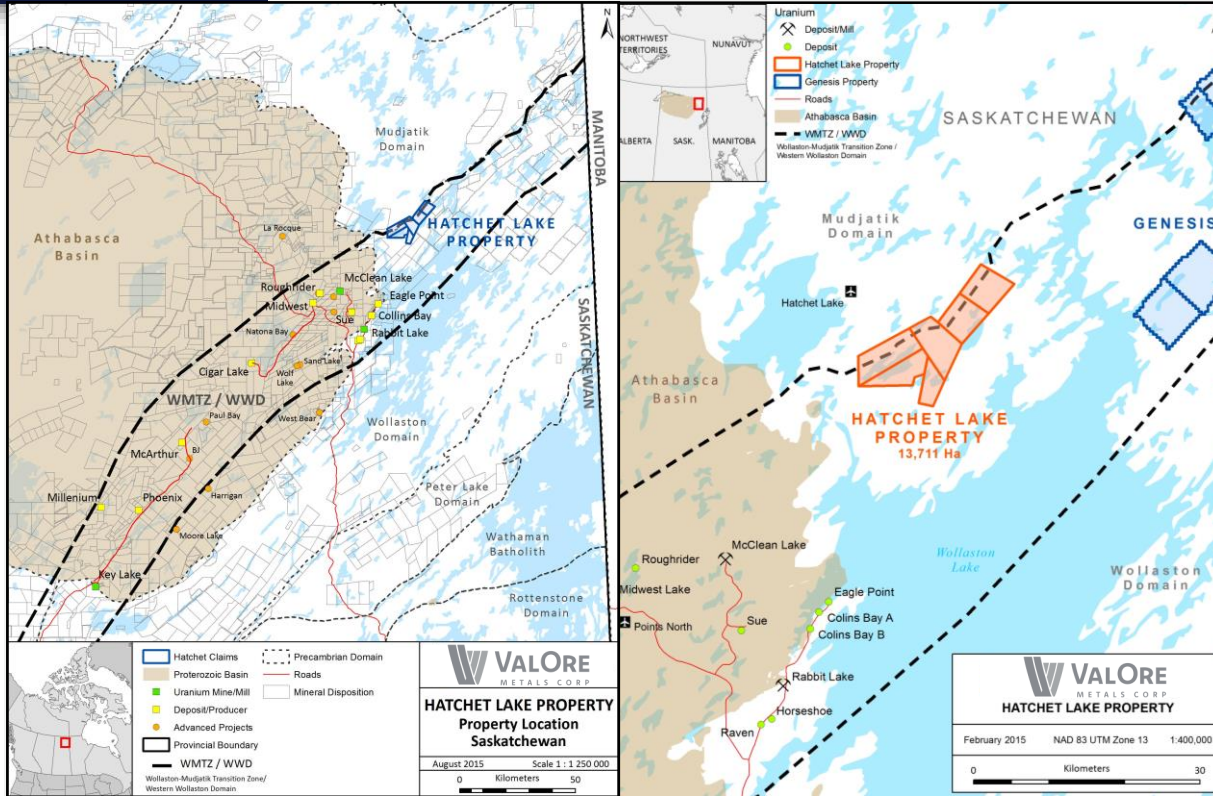
Athabasca Basin & Wollaston-Mudjatik Transition Zone Simplified Uranium Target Model (not to scale)

(modified from Card et al. 2010)



Since both properties lie entirely out of the Athabasca Basin, a basement-hosted, unconformity-related uranium system is the most likely type of uranium deposit to be discovered

Hatchet Lake

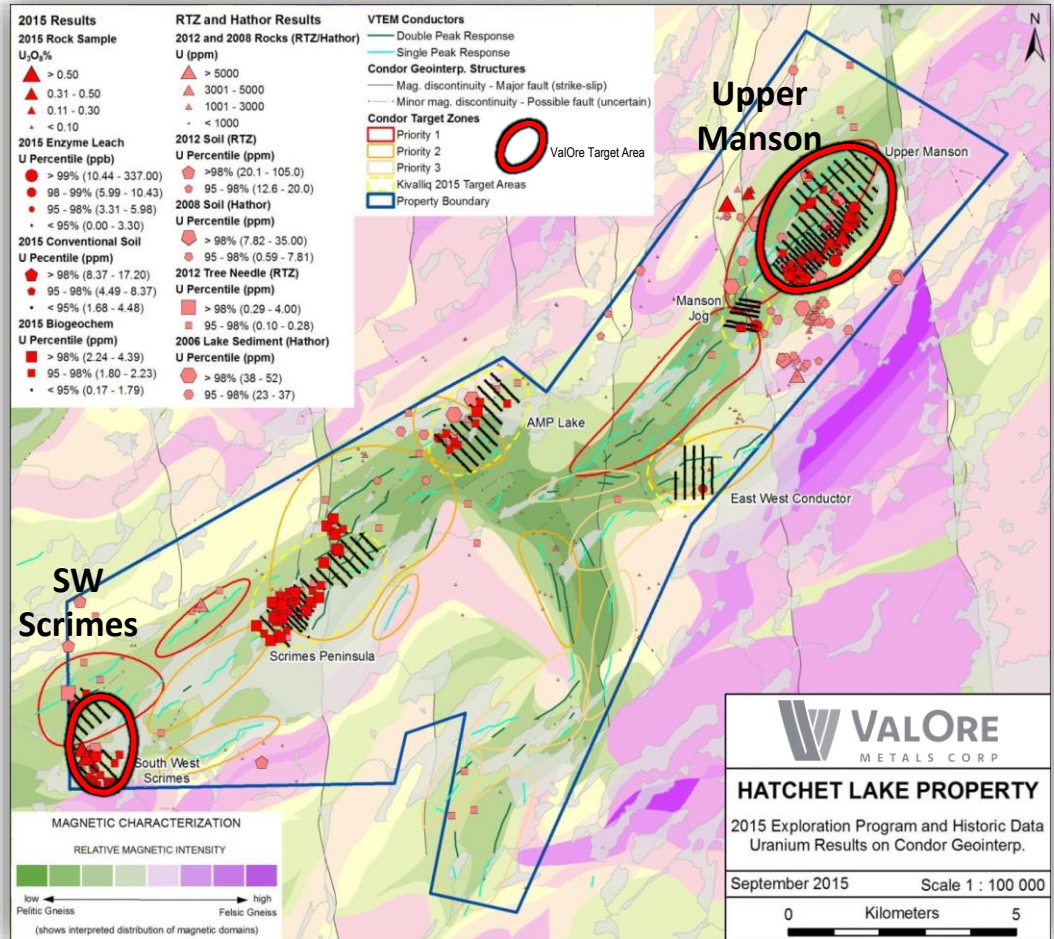


OVERVIEW

- ValOre holds 100% of the Hatchet Lake Uranium Property, subject to a 2% NSR
- 13,711 hectares in six claims adjacent to northeastern margin of Athabasca Basin
- 16km to the west of ValOre's Genesis Property
- Located 39km along-trend from the Roughrider uranium deposit and within 29km of Cameco's Eagle Point uranium mine
- Multiple unconformity-related basement targets based on previous work by Hathor Exploration Ltd. and Rio Tinto

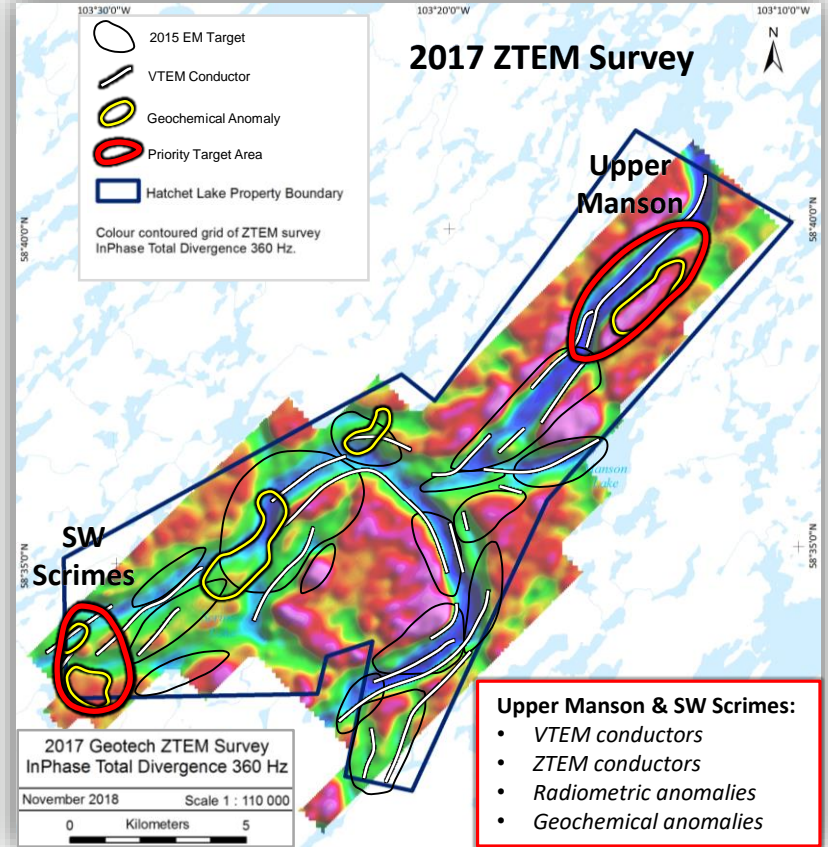
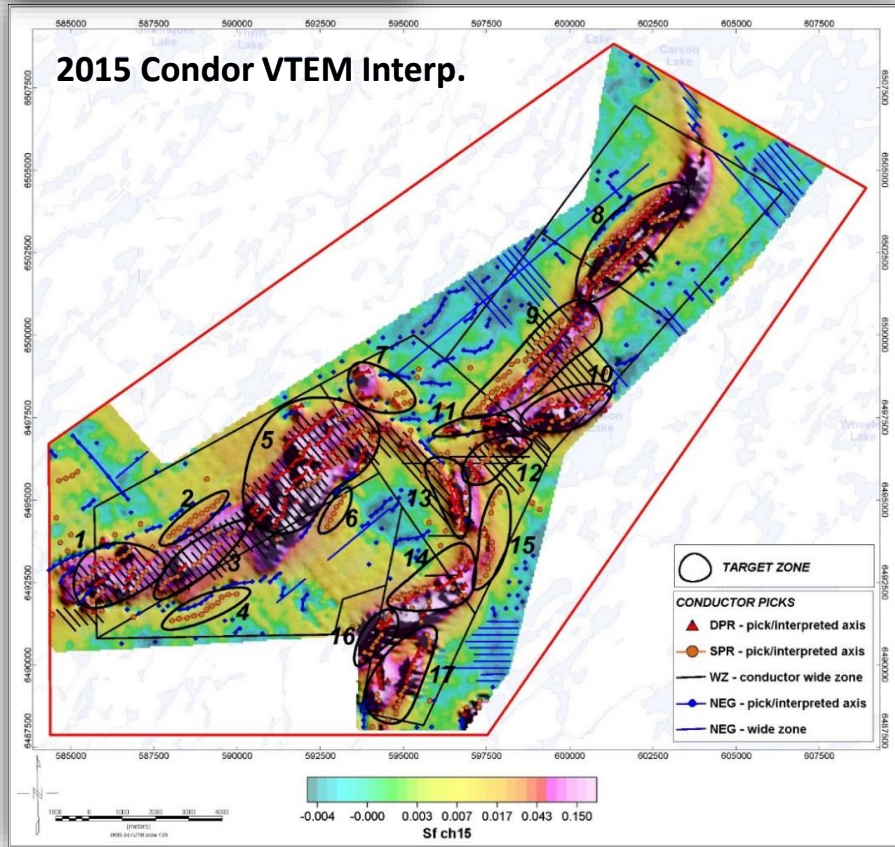
Data Compilation & Interpretation

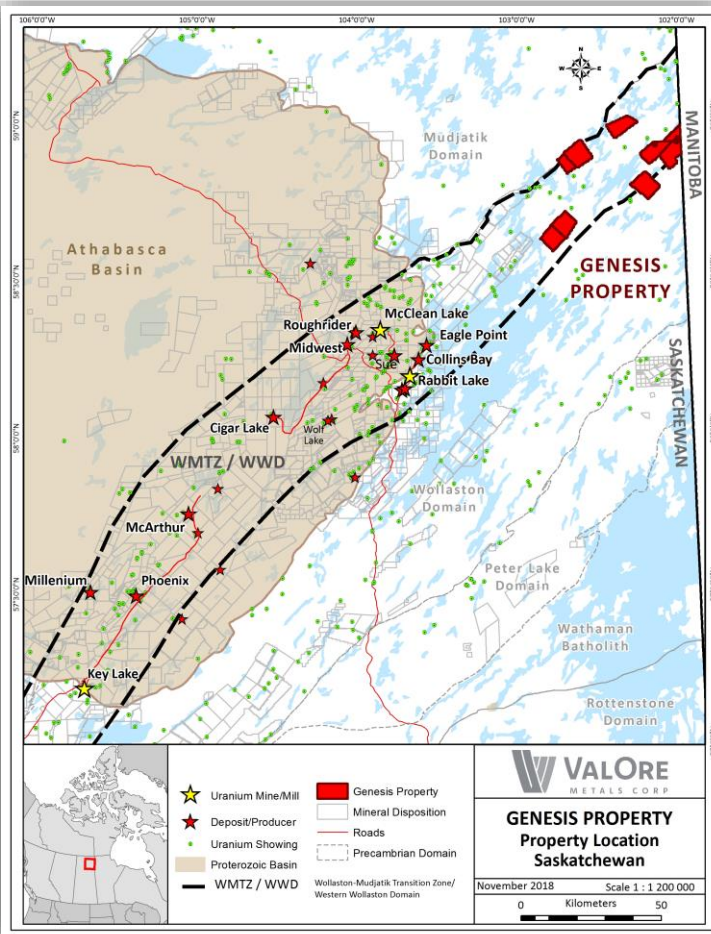
- Two high-priority zones have been advanced: **Upper Manson** and **SW Scrimmes**
- 140 line-km ground geophysics: 2007 VTEM defined **30 conductive targets** with a combined **53 line-km of strike length**
- Total samples: 1583 soil and 2404 bio-geochemical; (2018: 675 soil and 1087 bio-geochemical samples)
- 24 radioactive rock samples with assay results up to 2.43% U_3O_8
- Geochemical anomalies highlight a variety of uraniumiferous host rock that are coincident with conductive geophysical targets



Geophysical Targeting

- Target areas confirmed and refined by 2017 ZTEM survey (720 line-km, heli-borne)



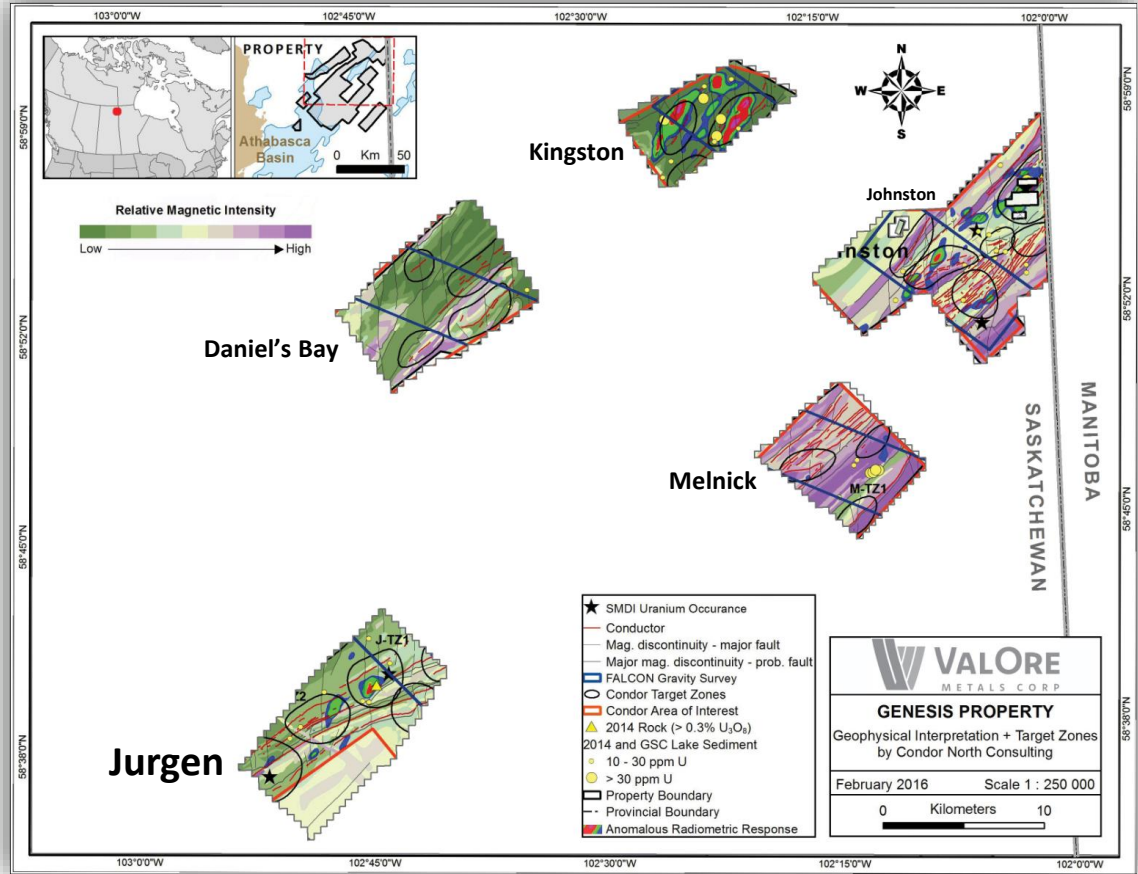


OVERVIEW

- ValOre holds 50% interest in the 36,949 ha property
- Roughrider Exploration Limited funding current exploration program pursuant to an option to acquire up to 85% interest
- 90km of prospective geology and structure; near Eagle Point uranium mine and Rabbit Lake mill
- 16km to the east of ValOre's Hatchet Lake Property
- >30 uranium showings and uraniumiferous boulder trains; 19% historic lake sediment anomalous uranium values >10 ppm U; ~30,000ha of detailed historic airborne geophysics

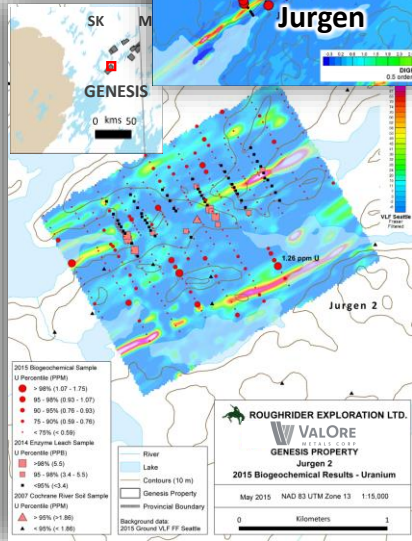
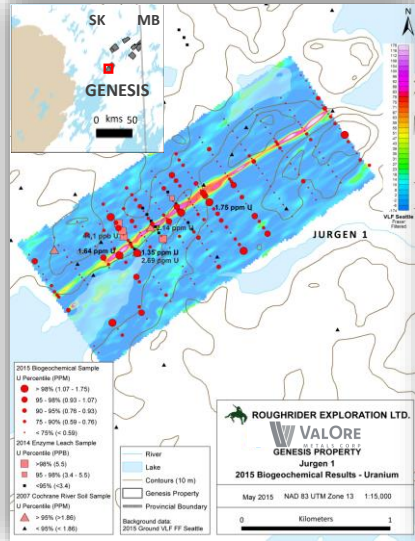
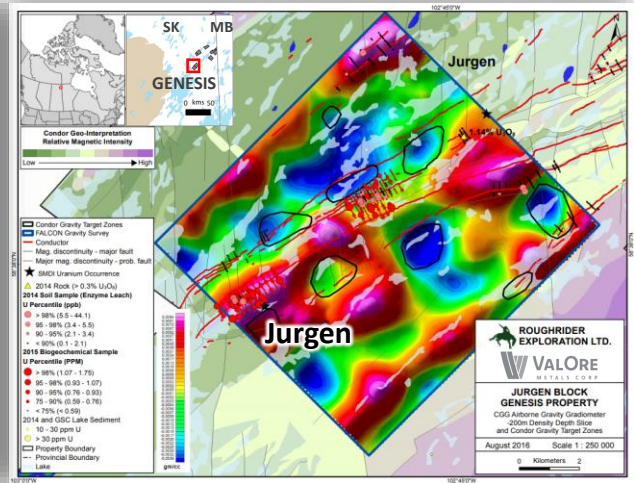
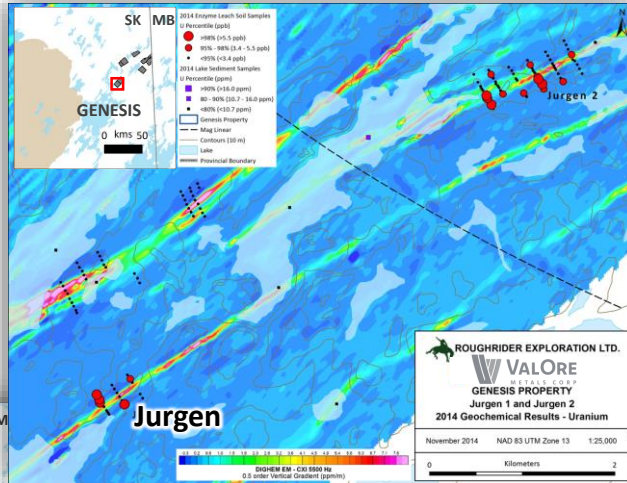
Data Compilation & Interpretation

- Jurgen:** The most prospective on the property, hosting 12 of the 31 target zones
- Kingston:** EM conductors trend along a regional geologic contact that is coincident with a magnetic low, lake sediments having anomalous uranium and several anomalous radiometric responses
- Daniel's Bay:** Enzyme leach soil and rock geochemical anomalies are spatially associated with medium to strong northeast to east-west trending EM conductors and a magnetic domain boundary
- Melnick:** A north-south strike-slip fault intersects a conductive contact along the boundary of a low magnetic response, coincident with a trend of uranium in lake sediments.



Jurgen Targeting

- Most compelling target on Property
- Highest uranium results: 2014 EL soils
- Highest uranium results: 2015 bio-geochemistry



- Main EM conductors are spatially associated with elevated radiometric signature and an anomalous boulder sample (1.41% U_3O_8)
- Strong correlation to anomalous bio-geochemical trends

Prolific Uranium District


The Western Wollaston Domain and Wollaston-Mudjatik Transition Zone host the majority of known Canadian uranium deposits and all of Canada's operating uranium mines.

Large & Strategic Landholdings

50,660 ha – total collective land package between Hatchet Lake and Genesis. Owners are motivated to conduct an accreted transaction.

Drill-Ready Targets

Compilation and interpretation of extensive lake sediment geochem, soil geochem, biogeochem, rock samples, and 30 conductive VTEM targets totaling over 53 line-km of prospective strike length.



Strategic landholdings along the underexplored northeast extension of a belt hosting all of Canada's operating uranium mines, and the majority of known Canadian uranium deposits.

– ValOre Chairman & CEO, Jim Paterson

Thank You.

Contact

Jim Paterson,
Chairman & CEO

604-646-4527
contact@valoremotals.com

Address

Suite 1020
800 West Pender St
Vancouver, BC | V6C 2V6

FORWARD LOOKING STATEMENTS

This presentation contains "forward-looking statements". These forward-looking statements are made as of the date of this presentation and Kivalliq Energy Corporation does not intend, and does not assume any obligation, to update these forward-looking statements. Forward-looking statements include, but are not limited to, statements with respect to the timing and amount of estimated future exploration, success of exploration activities, expenditures, permitting, and requirements for additional capital and access to data.

Forward-looking statements involve known and unknown risks, uncertainties and other factors which may cause the actual results, performance or achievements of the Company to be materially different from any future results, performance or achievements expressed or implied by the forward-looking statements. Such factors include, among others, risks related to actual results of current exploration activities; changes in project parameters as plans continue to be refined; the ability to enter into joint ventures or to acquire or dispose of property interests; future prices of mineral resources; accidents, labour disputes and other risks of the mining industry; ability to obtain financing; and delays in obtaining governmental approvals or financing.