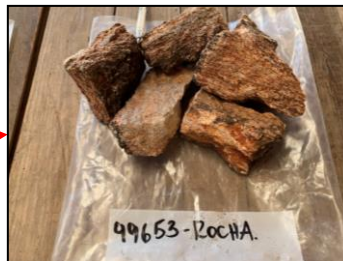
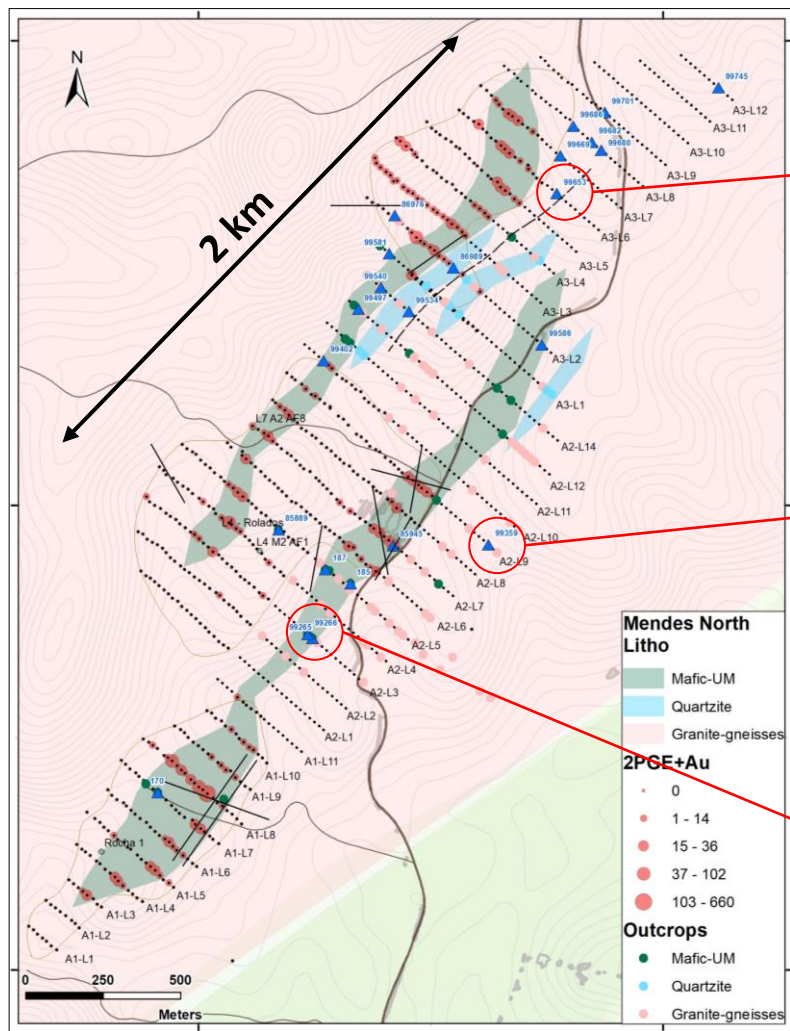


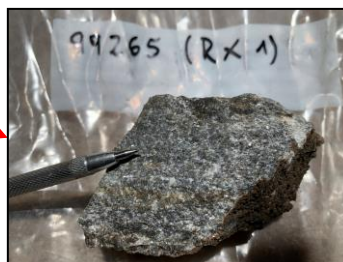
Figures 1A, 1B: Preliminary geological map of the Mendes North targets, with pictures of rock samples collected for assay from the prospective ultramafic belts (blue triangles).



Altered quartz veins with boxworks collected near NE-striking shear zone

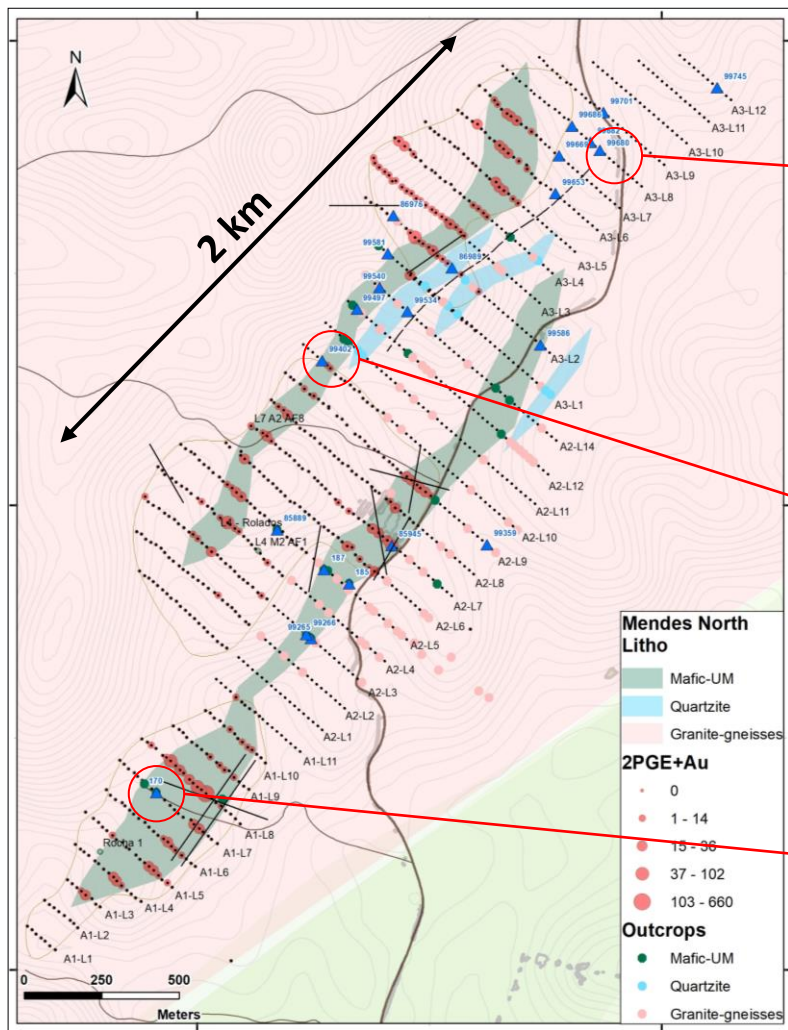


*Serpentinized mafic-ultramafic grab sample
Mag. Sus. Avg.: 18.4*



*Quartz-magnetite-rich rock (BIF)
Mag. Sus. Avg.: 20.5*

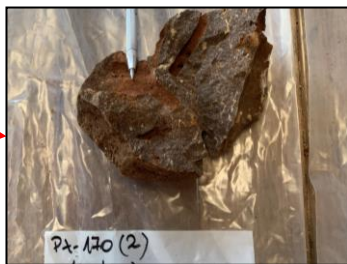
Figures 1A, 1B: Preliminary geological map of the Mendes North targets, with pictures of rock samples collected for assay from the prospective ultramafic belts (blue triangles).



*Quartz + magnetite + calcite (BIF)
Mag. Sus. Avg.: 41.8*



*Mafic-ultramafic rock with chromite and magnetite cumulates
Mag. Sus. Avg.: 64.0*



*Manganese-rich silicatic rock (gondite?)
Mag. Sus. Avg.: 29.3*