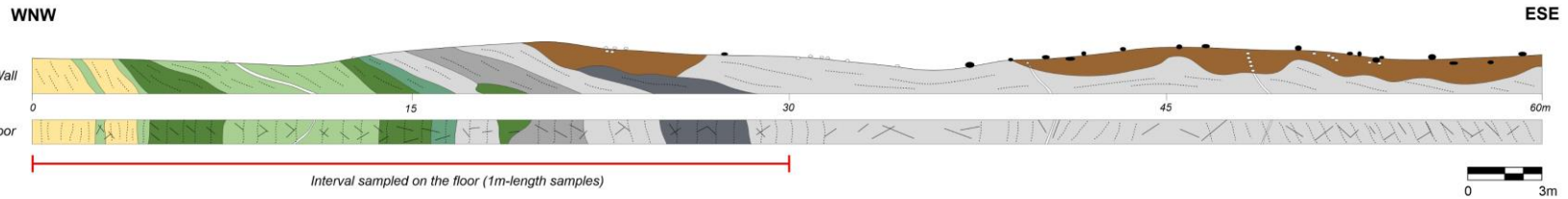
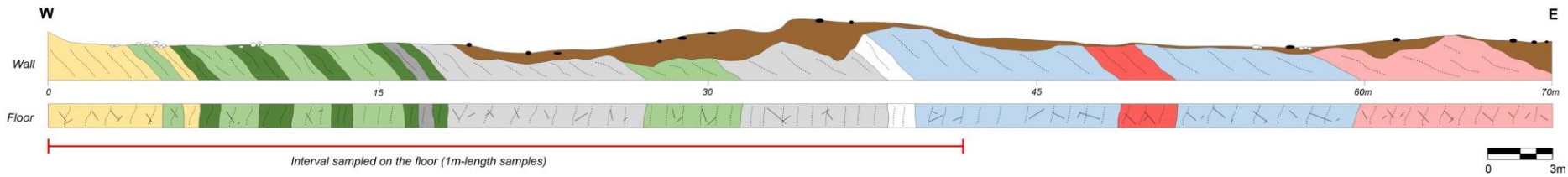


**Figure 2: Geological Cross Section of Re-mapped and Re-sampled Trapia 1 North Trenches**

**TR20TU01R - 280° AZ**

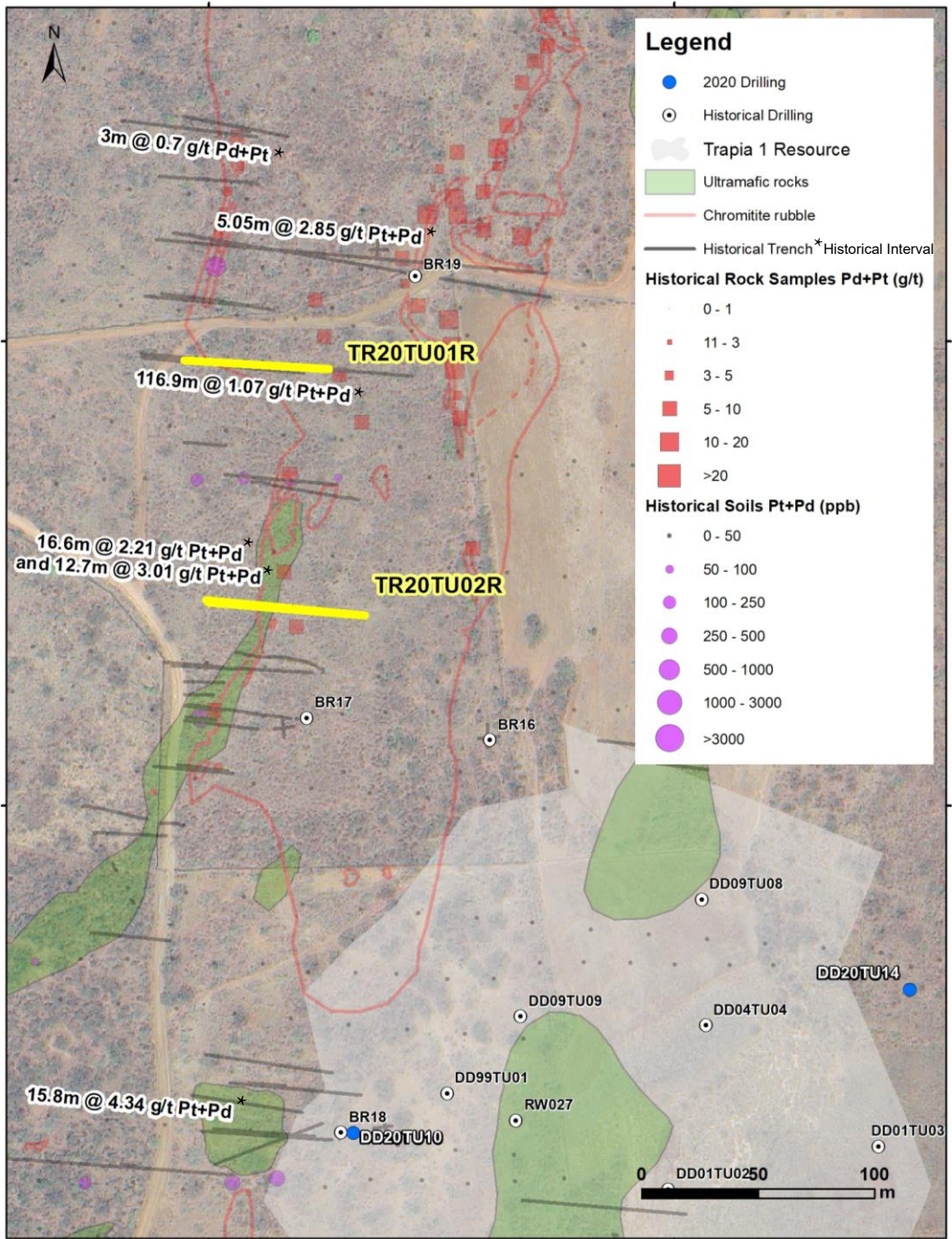


**TR20TU02R - 270° AZ**



**LEGEND**

- |                           |                  |                   |                           |              |                          |
|---------------------------|------------------|-------------------|---------------------------|--------------|--------------------------|
| Chromitite-rich colluvium | Amphibole schist | Gabbro            | Serpentinized ultramafics | Quartz veins | Quartz fragments         |
| Granite                   | Felsic dike      | Kaolinized gabbro | Ultramafics               | Foliation    | Chromitite blocks/floats |
| Banded Iron Formation     | Norite/Gabbro    | Amphibolite       | Gneiss                    | Fractures    |                          |



**Legend**

- 2020 Drilling
- Historical Drilling
- ⬭ Trapia 1 Resource
- Ultramafic rocks
- Chromitite rubble
- Historical Trench\* Historical Interval

**Historical Rock Samples Pd+Pt (g/t)**

- 0 - 1
- 11 - 3
- 3 - 5
- 5 - 10
- 10 - 20
- >20

**Historical Soils Pt+Pd (ppb)**

- 0 - 50
- 50 - 100
- 100 - 250
- 250 - 500
- 500 - 1000
- 1000 - 3000
- >3000

3m @ 0.7 g/t Pd+Pt \*

5.05m @ 2.85 g/t Pt+Pd \*

TR20TU01R

116.9m @ 1.07 g/t Pt+Pd \*

TR20TU02R

16.6m @ 2.21 g/t Pt+Pd \*  
and 12.7m @ 3.01 g/t Pt+Pd \*

15.8m @ 4.34 g/t Pt+Pd \*

BR19

BR17

BR16

BR18

DD09TU08

DD20TU14

DD09TU09

DD04TU04

DD99TU01

RW027

DD20TU10

DD01TU03

0 DD01TU0250 100 m